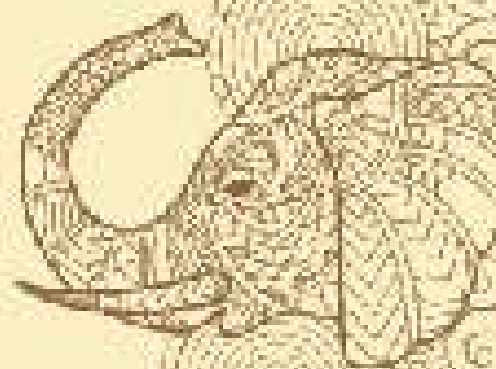
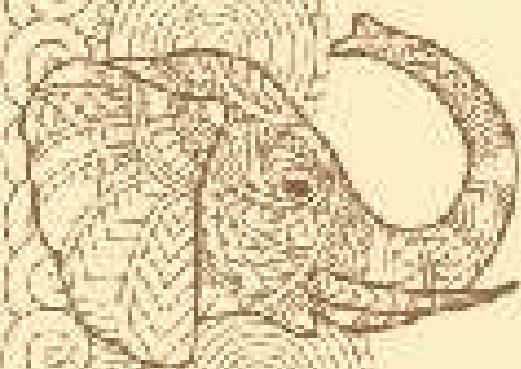




K-RERA/PRJ/TVM/029/2024

# **MANSIONS** **Satvika**

A JOYFUL LIFE AWAITS YOU



# MANSIONS MILESTONES

Endorsed by  
a Fraternity of  
**900**  
wonderful  
homeowners

Technical-led,  
with four CET  
Alumni  
in leadership roles

Backed by  
**35** years  
of trust

Track record of  
**25** apartment  
projects  
&  
**300** independent  
homes

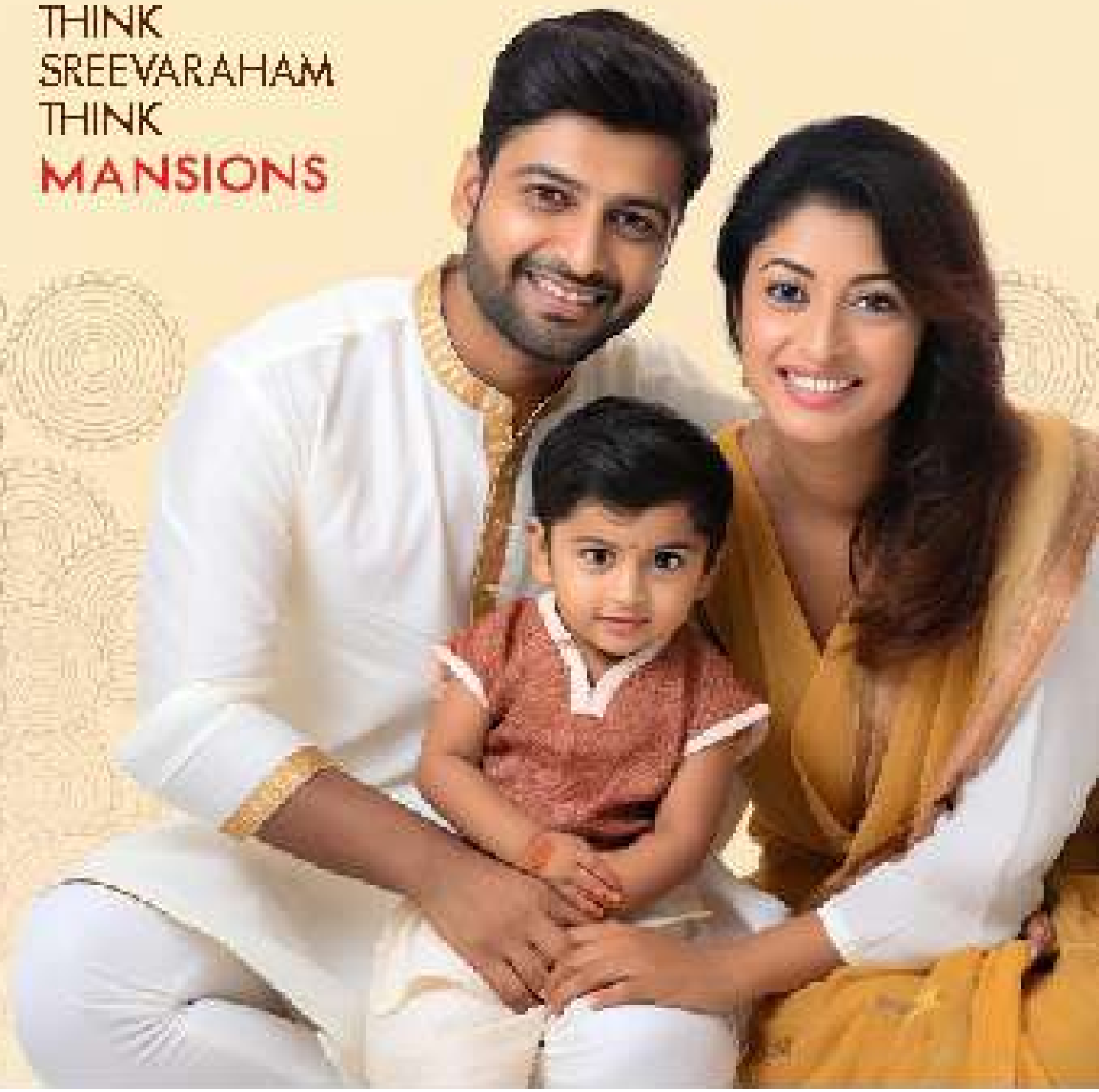


# SREEVARAHAM AND MANSIONS

Mansions has a very endearing affinity with families and communities in Sreevaraham.

Mansions enjoys the unique blessing of delivering more Apartment Projects in Sreevaraham than any other builder.

THINK  
SREEVARAHAM  
THINK  
MANSIONS



# SREEVARAHAM AND YOU

*Welcome to God's Own Land - Sreevaraham*

Wake up to the serene sounds of the tinkling bells of Sree Padmanabhaswamy and Sree Lakshmi Varahamoorthy Temples. With the largest temple pond in Kerala spread over an area of 8 acres.

Stay within just three kilometres from the Trivandrum International Airport, Railway Station and Bus Stand.

Soak in the divine fragrance manifesting from sacred spaces sprinkled across Sreevaraham.

Cherish owning a wonderful home at Sreevaraham. Where old world charm mingles with contemporary lifestyles.



P R E S E N T I N G

# MANSIONS Sativika

A JOYFUL LIFE AWAITS YOU

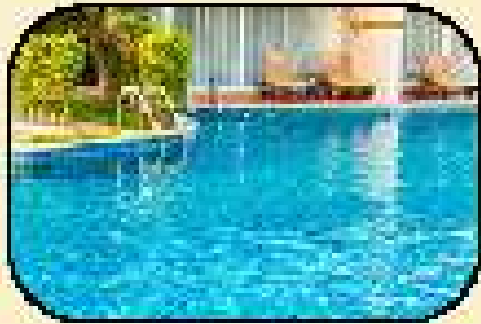
Welcome to  
Mansions Satvika,  
a charming Haven with  
just 19 apartments

2 & 3  
Bed Residences



# Leisure Amenities

*Enjoy the great life with Leisure Amenities*



SWIMMING POOL  
WITH CHANGE ROOM



FURNISHED ENTRANCE  
WAITING LOUNGE



AC MULTI-PURPOSE HALL



AC FITNESS CENTRE



KIDS' PLAY AREA



AC FURNISHED  
GUEST BEDROOM

**MANSIONS**

# Functional Amenities

*Make your life comfortable with Functional Amenities*

- FULLY AUTOMATIC PASSENGER LIFT
- BICOMB RUC/SBNSOR CARD ACCESS CONTROL
- CLOSED CIRCUIT CAMERAS AT VANTAGE POINTS
- REGULATED GAS SUPPLY PROVISION
- CONDUIT RPPING FOR EBY CHARGING POINT IN GAR.PARK
- SOLAR ASSESTED LIGHTING FOR COMMON AREA
- SOLAR WATERHEATER
- INTERCOM FACILITY
- SEPARATE WASHROOMS FOR WOMEN & MEN
- USE CHARGING POINTS IN BEDROOMS
- SHOPPING TROLLEYS FOR USE IN COMMON AREA



## TERMS & CONDITIONS

1. Payments can be made by bank transfer/ demand draft/ local cheque in favor of 'MANSIONS' payable at Trivandrum.
2. On allotment of an apartment, an agreement will be executed between the Promoter and the Allottee for the construction. The Sale deed for the apartment and undivided share in the land will be registered on receipt of full payment and before handing over the apartment. Stamp duty, registration charges and related incidental expenses shall be borne by the Allottee.
3. Statutory levies like GST, Building tax, Construction Workers Welfare Cess etc shall be paid by the Allottee. The Builder will not be responsible for any delay in getting water/ electric connection and house number from the concerned authorities. An association of apartment owners will be formed to carry out maintenance and repairs of common areas and facilities and other activities. Membership in the association is compulsory. The Association will also meet the expenses for common facilities and services. Maintenance charges/ deposits as specified by the Association will have to be paid regularly by each Owner as decided by the association.
4. All specifications and measurements in this brochure may be subject to minor variations.
5. This brochure does not constitute a legal offer. The information contained herein does not constitute a contract, nor a part of a contract or warranty.
6. All transactions are subject to the jurisdiction of the courts in Trivandrum.
7. The visuals and photographs shown are only indicative.

## Structure

Building on reinforced RCC Foundation & masonry for columns & beam

Walls : 15cm thick concrete hollow block masonry with 1/2" insulation in the wall. External walls with 1/2" insulation masonry walls for Internal

## Travellers

Walls : Vitroflex/Ceramic Tiles upto a height of 1.70 meters

Floor : Vitroflex/Ceramic Tiles

Partitions : White/Blue/ PVC wall, Glass and Wallpaper (where fit) & Aluminium

Tapes & fittings : Chromium Plated GI Imperial Fixtures

## Electrical

Conventional wiring using with 18mm<sup>2</sup> PVC insulated copper cables with modular switches.

Adequate light for wall plug points.

Independent energy meter for each apartment.

Generator load capacity 600 watts or much up to that.

Wired Splice & provision in Master Bedroom.

Provision for water purifier, washing machine, mixer, refrigerator and air-conditioner with power points.

Conventional wiring for electric work in Dining/Living Area.

## Kitchen

Countertop : Granite

Sink : Stainless steel sink with single bowl with single drain/overflow

Stove : Vitroflex/Ceramic Tiles upto 48 inch above counter.

## Fire Fighting

As per norms specified by Kerala Fire and Rescue Department.

## Doors

External Doors : Hardwood/Engineered Wood Frame with Veneered and Polished Finish Glass

Internal Doors : Hardwood/Engineered Wood Frame with Veneered with 1/2" glass or shelves

Taller Doors : Floor Holder, Swallowtail Pull Bars

Balcony Doors : Powder Coated Aluminium/UPVC Frames with Roughened Glass Tinted/Glazing material

## Plumbing

UPVC Pipes for water supply & drainage lines.

CWC papers for water supply & drainage lines & electric toilets.

## Flooring

General : Vitroflex Tiles

Balconies : Vitroflex/Ceramic Tiles

## Painting

Interior Walls : Acrylic emulsion over putty

Exterior walls : Exterior grade emulsion

MS Grill : Bronze Paint

## Water Supply

Overhead water storage tank with pump & arrangement.

## Windows

Powder coated Glass Aluminium/UPVC Window frames with Glazed Glass and Safety Grill



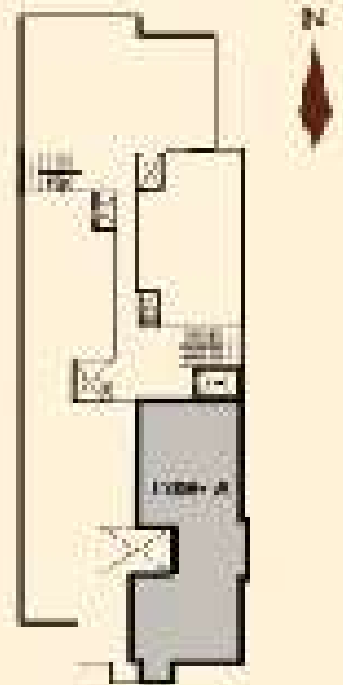
# MANSIONS Satvika

## FLOOR PLANS



**Type: A**

Carpet Area: 1138 sqft  
Balconies: 86 sqft  
Built-up Area: 1293 sqft  
Total Area: 16.32 aca



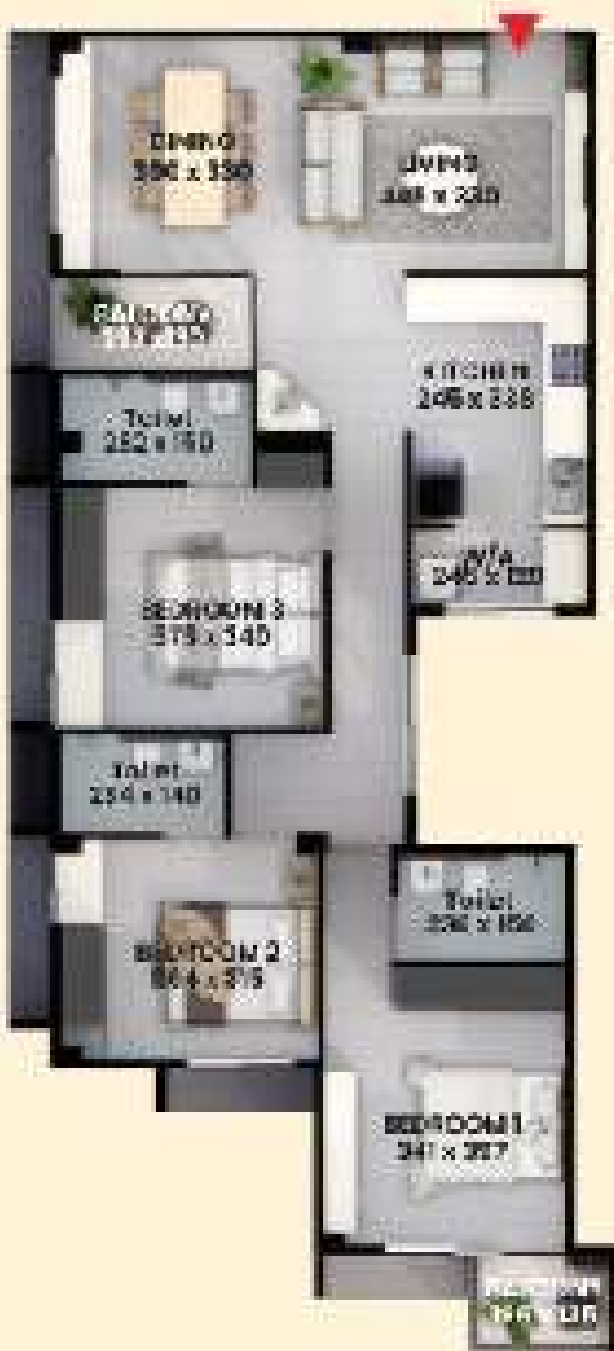
### Notes

1. Carpet area shown is the area of the carpet from 0.2m border of built-up area, but including passages and internal walls, as per norms of the RERA Act.
2. Furniture & fixtures shown are only for reference and not part of the standard specification.
3. All dimensions are in centimeters.

Min. 10% area may vary during construction.

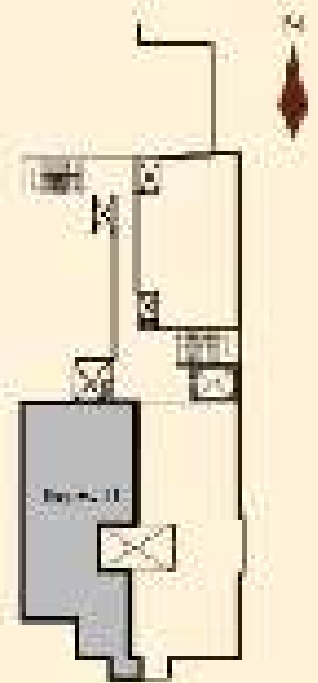
# MANSIONS Satvika

## FLOOR PLANS



### Type: B

Carpet Area: 1118 sqft  
Balcony: 70 sqft  
Built-up Area: 1248 sqft  
Total Area: 1357 sqft



#### Notes

1. Carpet Area shows, in the area of the apartment exclusive of internal walls, and excluding for columns and structural areas, as per norms of the local ACT.
2. Area covered by the area shown on the plan drawings and not part of the structural requirements.
3. All measurements are in millimeters.

For more information, please contact us at 020-2611 1111



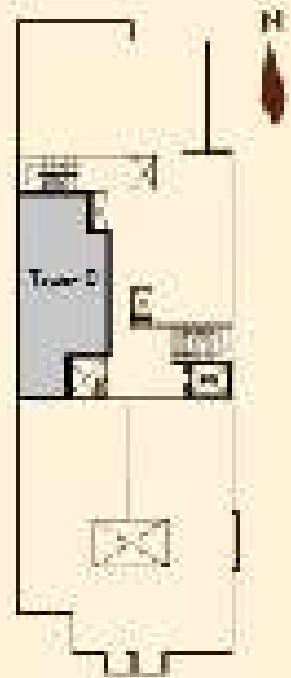
# MANSIONS Satvika

## FLOOR PLANS



### TYPE C

Carpet Area: 727 sqft  
 Built-up Area: 911 sqft  
 Plinth Area: 857 sqft  
 Total Area: 1029 sqft



- Note:**
1. Carpet area shown, is the area of the apartment exclusive of internal walls, load bearing columns and structural cores, as per norms of the local ACT.
  2. Balconies & Pooja area shown are only indications and not part of the structural specifications.
  3. All measurements are in centimeters.

Dimensions may vary without prior intimation.



### Type-D

Carpet Area: 1161 sqft  
 Built-up Area: 1351 sqft  
 Plinth Area: 1268 sqft  
 Total Area: 1504 sqft



- Notes:**
1. Carpet area shown is the area of the apartment excluding all internal walls, for exclusive bedrooms and kitchen area. It is not inclusive of the terrace area.
  2. Plinth area & Built-up area are inclusive of the terrace part of the area and area of the lift.
  3. All dimensions are approximate.
- All dimensions are approximate.  
 All dimensions are approximate.

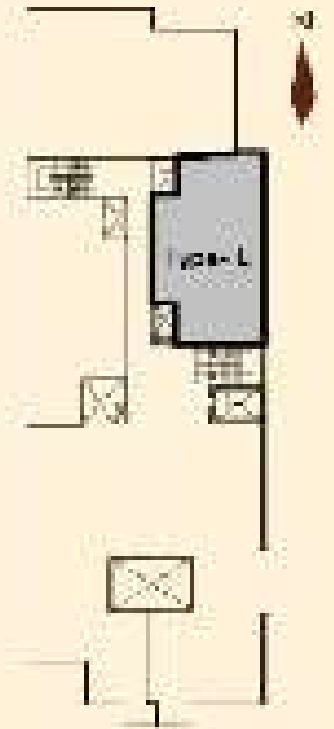
# MANSIONS Satvika

## FLOOR PLANS



type B

Carpet Area: 770 sqft  
 Balconies: 20 sqft  
 Plaza Area: 700 sqft  
 Total Area: 994 sqft



**Notes**  
 Carpet area includes the area of the apartment including of internal walls, but excluding the common and external walls, upper floors or the roof top.

1. No items of furniture included in carpeted areas and not part of the structural requirements.

2. All dimensions in feet & centimeters.

3. Other plans may vary from this one as per location.